

# BRACKET BREAKDOWN

## #4 CALIFORNIA

23-10 | PACIFIC-12 (13-7)  
ROAD (4-8) | NEUTRAL (1-2)



*Cal* PAC-12's best defensive team

*Cal* Holding teams to just 41% shooting inside the arc

*Cal* Since February, Cal has been the 3rd most efficient team in the country

**#0 Jaylen Brown** Pos: F HT: 6-7 WT: 225 Yr: FR

**MPG PPG FGM-A FG% 3PT% 3PM-A RPG**  
15-16 27:56 15.0 4.9-11.3 43.5% 30.0% 30-100 5.5

PAC-12 Freshman of the Year and All PAC-12 First Team  
When he limits TO's and takes good shots, he is a rim-attacking nightmare

**#1 Ivan Rabb** Pos: F HT: 6-11 WT: 220 Yr: FR

**MPG PPG FGM-A FG% 3PT% 3PM-A RPG**  
28:23 12.5 4.7-7.6 62.2% 100.0% 1-1 8.5

High level Freshman who is dominant in the paint  
Leads Cal in FG% (62%)

**SOUTH**



Record vs RPI Top 25	2-4
Schedule Strength	14th
BPI Rank	21st
Last 10	8-2
Big Wins	USC, Arizona
National Champion	1959
NCAA Appearance	19th
Last Appearance	2013 (Second Round)

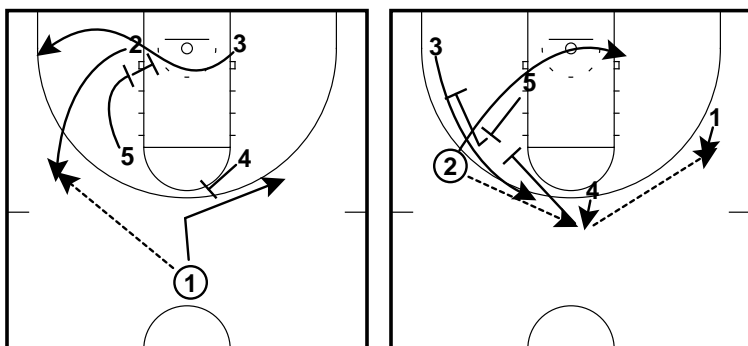
### DR DISH HOTSHOT

**#24 Jordan Mathews** Pos: G HT: 6-4 WT: 203 Yr: JR

**MPG PPG FGM-A FG% 3PT% 3PM-A RPG**  
29:41 13.2 4.1-9.8 41.4% 41.7% 86-206 3.4

High volume shooter  
Shot 57 more 3's (206) than the next player on the roster

	California	Vs	Road
PPG	75.1	67.0	69.8
FG%	46.1%	39.3%	42.8%
3PT%	36.9%	35.1%	35.8%
%A 3PT	33.6%	26.4%	31.5%
FTA	23.6	21.8	20.8
FT%	65.6%	70.5%	20.8
Rebounds	36.5	29.4	35.3
Assists	12.9	10.9	9.8
Turnovers	12.2	9.7	13.0



powered by

