

BRACKET BREAKDOWN

#4 DUKE

23-10 | ACC (12-8)
ROAD (7-5) | NEUTRAL (3-3)



- Defending National Champion Duke struggled to find consistency since losing Amile Jefferson
- They have enough offensive firepower to hang around with any team but a lack of consistency on the defensive end
- Give up 72 ppg



WEST

#14 Brandon Ingram Pos: G/F HT: 6-9 WT: 190 Yr: FR

MPG	PPG	FGM-A	FG%	3PT%	3PM-A	RPG
34:09	16.8	5.8-13.1	44.1%	41.3%	74-179	6.8

6'9" combo player who is shooting and impressive 41% from 3-point territory

#40 Marshall Plumlee Pos: C HT: 7-0 WT: 250 Yr: SR

MPG	PPG	FGM-A	FG%	3PT%	3PM-A	RPG
30:34	8.2	2.8-4.2	66.9%	--	0-0	8.6

Duke will need to utilize Plumlee's size in the post

Record vs RPI Top 25	4--5
Schedule Strength	10th
BPI Rank	11th
Last 10	6-4
Big Wins	North Carolina, Virginia
National Champions	'91, '92, '01, '10, '15
NCAA Appearance	41
Last Appearance	2015 (National Champions)

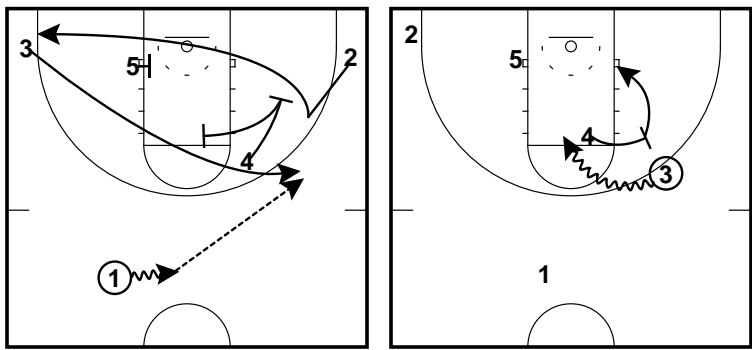
DR DISH HOT SHOT

#3 Grayson Allen Pos: G HT: 6-5 WT: 205 Yr: SO

MPG	PPG	FGM-A	FG%	3PT%	3PM-A	RPG
36:16	21.6	6.7-14.3	46.7%	41.7%	83-199	4.5

After his coming out party in last year's Final Four, Grayson has been the engine that makes Duke go this year. He leads duke in scoring, assists, and FG% among others

	Duke	Vs	Road
PPG	81.5	72.1	76.3
FG%	45.9%	44.5%	45.9%
3PT%	38.7%	33.9%	37.7%
%A 3PT	40.1%	29.0%	41.8%
FTA	24.0	15.7	21.8
FT%	72.2%	68.4%	21.8
Rebounds	32.6	33.4	28.5
Assists	13.5	14.5	12.4
Turnovers	9.9	12.2	11.4



powered by

