

BRACKET BREAKDOWN

#4 IOWA STATE

21-11 | BIG 12 (10-9)
ROAD (5-8) | NEUTRAL (3-2)



I Under new leadership with Steve Prohm, the Cyclones look to avenge their 1st round loss to UAB last season

I Can score inside and outside but their defensive is the question

I 257th in the nation for points allowed (75 ppg)



MIDWEST

#31 Georges Niang Pos: F HT: 6-8 WT: 230 Yr: SR



MPG PPG FGM-A FG% 3PT% 3PM-A RPG
32:54 19.8 7.8-14.3 54.7% 38.1% 48-126 6.2

Leads the Cyclones in scoring and just about every other category on the board
2nd in assists at 3.3 per game

#11 Monte Morris Pos: G HT: 6-3 WT: 175 Yr: JR



MPG PPG FGM-A FG% 3PT% 3PM-A RPG
38:03 13.9 5.4-11.1 48.9% 36.1% 35-97 4.1

Throws an impressive 6.9 assists per game while also scoring nearly 14 ppg

Record vs RPI Top 25	2-8
Schedule Strength	12th
BPI Rank	18th
Last 10	7-3
Big Wins	Kansas, Iowa, Texas
Final Four	1944
NCAA Appearance	18th
Last Appearance	2015 (First Round)

DR DISH HOT SHOT

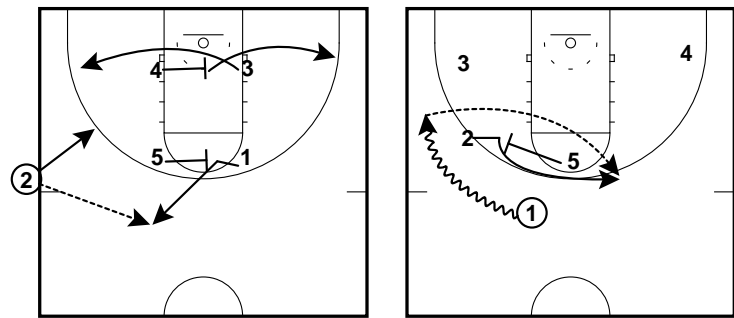
#21 Matt Thomas Pos: G HT: 6-4 WT: 197 Yr: JR



MPG PPG FGM-A FG% 3PT% 3PM-A RPG
33:11 10.7 3.6-8.3 43.4% 43.0% 80-186 4.5

70% of his shots come from downtown to lead the Cyclones in 3-point shooting

	Iowa St	Vs	Road
PPG	81.8	75.0	79.1
FG%	50.2%	43.5%	49.6%
3PT%	38.0%	33.6%	37.3%
%A 3PT	35.0%	35.7%	33.8%
FTA	15.8	15.7	14.2
FT%	70.6%	68.5%	14.2
Rebounds	33.4	33.3	32.2
Assists	16.5	14.1	14.0
Turnovers	11.6	12.4	12.1



powered by

