

BRACKET BREAKDOWN

#4 KENTUCKY

26-8 | SEC (16-5)

ROAD (7-8) | NEUTRAL (5-1)



Have only lost two games since February 6



One area teams can exploit Kentucky is defensive rebounding, their inexperience has struggled all season keeping teams off the boards



SEC Regular Season (tied with Texas A&M) and Tournament Champions

#3 Tyler Ulis Pos: G HT: 5-11 WT: 160 Yr: SO



MPG	PPG	FGM-A	FG%	3PT%	3PM-A	RPG
36:56	17.2	5.4-12.5	43.2%	34.2%	52-152	3.2

SEC Player of the Year and Defensive Player of the Year
Shooter with range who can get to the rim at will

#22 Alex Poythress Pos: F HT: 6-8 WT: 230 Yr: SR



MPG	PPG	FGM-A	FG%	3PT%	3PM-A	RPG
23:45	10.3	3.9-6.4	61.0%	30.4%	7-23	6.1

Missed part of the season due to a knee injury but has been solid every since returning

EAST

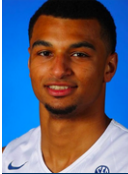


Record vs RPI Top 25	3-2
Schedule Strength	30th
BPI Rank	10th
Last 10	9-1
Big Wins	Duke, Louisville
National Champion	'48, '49, '51, '58, '78, '96, '98, '12 (17 - Final Fours)
NCAA Appearance	56th
Previous Final Four	2015 (Final Four)

	Kentucky	Vs	Road
PPG	79.7	68.3	77.0
FG %	47.9%	40.0%	45.1%
3PT %	37.0%	33.0%	37.0%
%A 3PT	31.4%	29.8%	30.3%
FTA	22.9	23.8	22.6
FT%	68.3%	69.9%	22.6
Rebounds	35.6	30.1	34.2
Assists	14.4	9.1	13.7
Turnovers	11.0	12.3	10.5

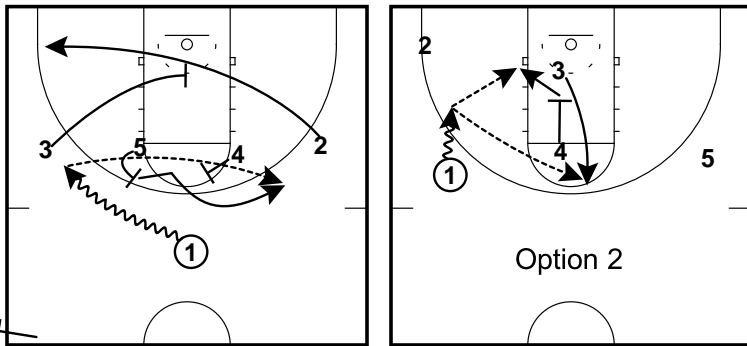
DR DISH HOTSHOT

#23 Jamal Murray Pos: G HT: 6-4 WT: 207 Yr: FR



MPG	PPG	FGM-A	FG%	3PT%	3PM-A	RPG
35:14	20.1	6.8-14.8	45.6%	42.1%	110-261	5.1

When Murray is 'on', the 'Cats are hard to beat
He has an NBA skill set shooting 42% from behind the arc



powered by

