

# BRACKET BREAKDOWN

## #5 MARYLAND

25-8 | BIG TEN (13-7)  
ROAD (6-7) | NEUTRAL (5-1)



**M** Lost 4 of last 6 games

**M** Only giving up 66 ppg on defense

**M** As gifted and balanced a team you will find in the tournament if they take care of the ball

**#2 Melo Trimble** Pos: G HT: 6-3 WT: 185 Yr: SO



MPG	PPG	FGM-A	FG%	3PT%	3PM-A	RPG
32:40	14.4	4.4-10.5	41.4%	33.5%	56-167	3.5

After a stellar Freshman campaign, Trimble has experience a Sophomore slump. Look for him to make a name for himself in March.

Involved in pick & rolls 60% of Maryland's possessions

**#33 Diamond Stone** Pos: C HT: 6-11 WT: 255 Yr: FR



MPG	PPG	FGM-A	FG%	3PT%	3PM-A	RPG
22:33	12.9	4.9-8.7	56.6%	--	0-0	5.5

Dominant big man inside leading the Terrapins in FG% (56.6%) Scoring 45% of the time when he touches the ball in the post

**SOUTH**

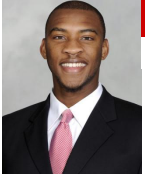


Record vs RPI Top 25	1-5
Schedule Strength	34th
BPI Rank	20th
Last 10	5-5
Big Wins	Purdue, Iowa
National Champion	2002 (2 - Final Fours)
NCAA Appearance	26th
Last Appearance	2015 (Second Round)

	Maryland	Vs	Road
PPG	76.1	66.3	70.1
FG%	48.8%	40.8%	45.2%
3PT%	37.4%	32.2%	35.6%
%A 3PT	37.5%	35.4%	37.4%
FTA	20.2	15.9	17.3
FT%	76.0%	70.0%	17.3
Rebounds	32.7	29.0	32.7
Assists	14.1	11.4	12.3
Turnovers	12.9	11.2	13.5

### DR DISH HOTSHOT

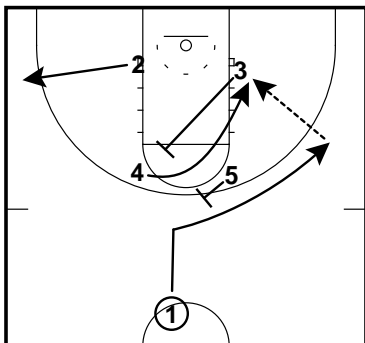
**#0 Rasheed Sulaimon** Pos: G HT: 6-4 WT: 190 Yr: SR



MPG	PPG	FGM-A	FG%	3PT%	3PM-A	RPG
32:32	11.1	3.8-8.2	46.5%	44.7%	55-123	3.5

Transfer from Duke

Quick release off screens and very explosive off the dribble



powered by

