

BRACKET BREAKDOWN

#5 INDIANA

27-7 | BIG TEN (15-4)
ROAD (7-5) | NEUTRAL (4-3)



Ψ Held Kentucky to .94 points per possession (4-6 from 3)

Ψ Question is will IU get Robert Johnson back (reinured ankle)

Ψ Rely heavily on ball movement that leads to 3, dunks & layups

#11 Kevin Yogi Ferrell Pos: G HT: 6-0 WT: 180 Yr: SR

MPG PPG FGM-A FG% 3PT% 3PM-A RPG



NCAA 36:00 19.0 6.0-13.0 46.2% 45.5% 5-11 3.0

True floor general that has continued to lead the way for the Hoosiers; shooting an impressive 46% from downtown

#31 Thomas Bryant Pos: C HT: 6-10 WT: 245 Yr: FR

MPG PPG FGM-A FG% 3PT% 3PM-A RPG



NCAA 21:00 16.0 5.5-7.5 73.3% 0.0% 0-2 3.5

Producing big time for IU in the paint going 11-13 inside the arc through two games

DR DISH HOT SHOT

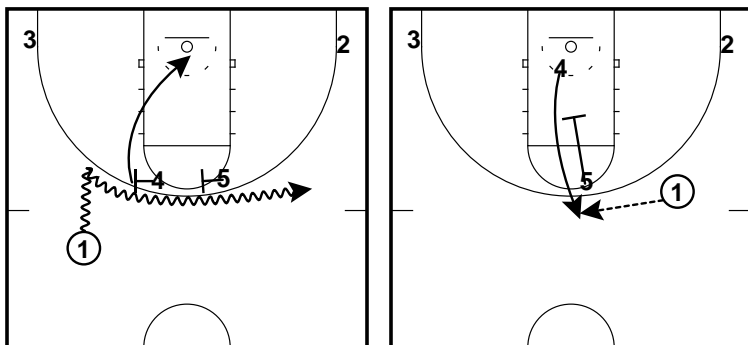
#2 Nick Zeisloft Pos: G HT: 6-4 WT: 210 Yr: SO

MPG PPG FGM-A FG% 3PT% 3PM-A RPG



NCAA 24:30 6.0 2.0-5.5 36.4% 40.0% 4-10 1.0

91% of his shot attempts are behind the 3-point line



EAST



	PTS	FG%	3FGM-A	REB	A/TO
#11 Ferrell	19.0	46.2%	5-11	3.0	4.7
#31 Bryant	16.0	73.3%	0-2	3.5	0.0
#5 Williams	12.5	42.1%	0-3	6.0	0.4
#3 Anunoby	10.5	81.8%	3-4	2.5	1.0
#0 Bielfeldt	7.5	66.7%	1-2	5.5	1.0
#4 Johnson	6.5	71.4%	3-4	0.5	6.0
#2 Zeisloft	6.0	36.4%	4-10	1.0	2.0
#30 Hartman	5.0	62.5%	0-1	4.0	2.7

	Indiana	NCAA	NCAA Opp
PPG	82.5	86.0	70.5
FG %	50.5%	56.9%	44.8%
3PT %	41.6%	43.2%	21.2%
%A 3PT	40.5%	33.9%	28.4%
FTA	19.5	21.0	18.5
FT%	72.5%	76.2%	18.5
Rebounds	34.6	29.0	26.5
Assists	16.1	18.0	8.5
Turnovers	13.6	12.5	15.5

powered by

