

BRACKET BREAKDOWN

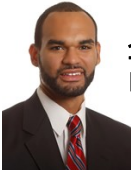
#1 KANSAS

32-4 | BIG 12 (18-3)
ROAD (9-4) | NEUTRAL (2-0)



- Scored 58 points in the pain vs Austin Peay
- Seldon and Ellis combined for 43 points vs UCONN
- Kansas grabbed 88% of available offensive rebounds vs UCONN

#34 Perry Ellis	Pos: F	HT: 6-8	WT: 225	Yr: SR		
MPG	PPG	FGM-A	FG%	3PT%	3PM-A	RPG
15-16 30:10	16.9	6.3-11.8	53.3%	44.4%	28-63	5.9
NCAA 28:30	21.0	8.5-12.0	70.8%	66.7%	2-3	5.0



Shot 71% inside the arc in the 1st two games
Scored in double figures in every game except two this season

#0 Frank Mason III	Pos: G	HT: 5-11	WT: 185	Yr: JR		
MPG	PPG	FGM-A	FG%	3PT%	3PM-A	RPG
15-16 33:10	12.8	4.0-9.2	43.4%	39.0%	41-105	4.3
NCAA 31:30	8.5	1.5-7.5	20.0%	0.0%	0-6	3.0



Didn't shoot the ball particularly well in the 1st two games but contributed from the FT line and dished out 8 assists for the weekend.

SOUTH



	PTS	FG%	3FGM-A	REB	A/TO
#34 Ellis	21.0	70.8%	2-3	5.0	1.0
#1 Selden Jr.	18.0	52.0%	3-9	5.0	1.7
#10 Mykhailiuk	12.0	75.0%	4-5	1.5	0.3
#33 Lucas	11.0	72.7%	0-0	10.0	1.3
#13 Diallo	9.0	80.0%	0-0	4.0	0/0
#0 Mason III	8.5	20.0%	0-6	3.0	1.6
#2 Vick	7.0	100.0%	1-1	0.0	2/0
#4 Graham	6.5	36.4%	2-7	3.5	4.0

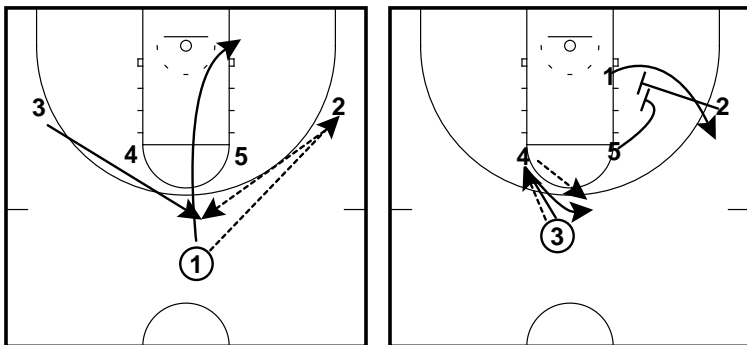
DR DISH HOTSHOT

#1 Wayne Selden Jr	Pos: G	HT: 6-5	WT: 230	Yr: JR		
MPG	PPG	FGM-A	FG%	3PT%	3PM-A	RPG
15-16 29:31	13.6	4.9-10.3	47.7%	40.4%	72-178	3.4
NCAA 27:00	18.0	6.5-12.5	52.0%	33.3%	3-9	5.0



Shooting %'s dropped from the regular season, he will have to get back to making shots in order to advance

	Kansas	NCAA	NCAA Opp
PPG	82.0	89.0	70.0
FG %	49.6%	52.9%	37.4%
3PT %	42.3%	36.4%	37.8%
%A 3PT	33.3%	27.3%	30.1%
FTA	22.5	24.5	24.0
FT%	71.0%	77.6%	24.0
Rebounds	35.5	40.5	26.5
Assists	16.1	18.5	8.5
Turnovers	12.4	11.5	8.0



powered by

