

# BRACKET BREAKDOWN

## #7 WISCONSIN

22-12 | BIG TEN (12-7)

ROAD (8-6) | NEUTRAL (3-2)



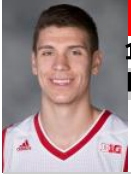
**W** Has held two high powered offenses to just 106 total points the last two games (.86 ppp)

**W** Only scoring 57 ppg - Badgers will have to rely on their defense to get past Notre Dame

**W** Average margin of victory in the tournament is only 3.5 points

#22 Ethan Happ Pos: F HT: 6-9 WT: 235 Yr: FR

	MPG	PPG	FGM-A	FG%	3PT%	3PM-A	RPG
15-16	28:03	12.4	4.6-8.6	54.0%	--	0-0	7.8
NCAA	30:30	16.5	6.5-9.0	72.2%	--	0-0	8.0



Has scored 18 and 15 in the opening games shooting at at 72% clip

#30 Vitto Brown Pos: F HT: 6-8 WT: 230 Yr: JR

	MPG	PPG	FGM-A	FG%	3PT%	3PM-A	RPG
15-16	25:15	9.8	3.7-8.3	44.9%	40.4%	36-89	5.1
NCAA	27:30	11.5	4.5-8.0	56.3%	50.0%	5-10	4.0



Another 3-pt threat on the floor who shot 40% on the season

**EAST**



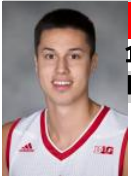
	PTS	FG%	3FGM-A	REB	A/TO
#22 Happ	16.5	72.2%	0-0	8.0	0.6
#30 Brown	11.5	56.3%	5-10	4.0	0.3
#24 Koenig	11.0	30.4%	6-14	7.0	1.0
#10 Hayes	9.0	18.5%	0-11	6.5	5.0
#3 Showalter	4.5	30.8%	1-5	2.5	1.0
#25 Illikainen	1.0	33.3%	0-1	1.0	0.0
#15 Thomas	1.0	33.3%	0-2	2.5	0/0
#11 Hill	1.0	16.7%	0-3	1.0	3/0

	Wisconsin	NCAA	NCAA Opp
PPG	68.1	56.5	53.0
FG%	42.6%	37.5%	39.2%
3PT%	35.1%	26.1%	29.6%
%A 3PT	34.2%	41.1%	26.5%
FTA	21.2	14.0	14.0
FT%	70.4%	60.7%	14.0
Rebounds	31.7	34.0	33.5
Assists	11.4	9.0	8.0
Turnovers	10.8	9.0	9.0

### DR DISH HOTSHOT

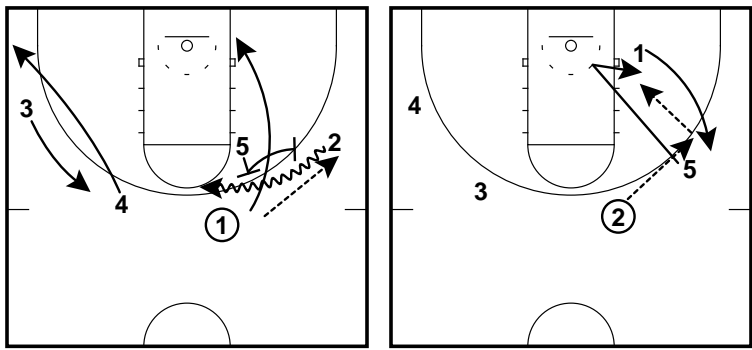
#24 Bronson Koenig Pos: G HT: 6-4 WT: 193 Yr: JR

	MPG	PPG	FGM-A	FG%	3PT%	3PM-A	RPG
15-16	34:51	13.3	4.4-11.0	39.7%	39.6%	82-207	2.8
NCAA	37:00	11.0	3.5-11.5	30.4%	42.9%	6-14	7.0



61% of his shots have been behind the arc connecting on 6-14

Hit buzzer beater to advanced to Sweet 16



powered by

